

GALAXY ROLLING GRILLES

Technical Specification

Curtain:

GALAXY - Aluminium extruded punched profile, 42% visibility, up to 4500 mm wide.

GALAXY MAX - Aluminium extruded punched profile, 47% visibility, up to 7000 mm wide.

Bottom Rail:

Aluminium extruded profile with a rubber seal to bottom edge.

Side Guides:

GALAXY - Aluminium extruded profile c/w brush insert, 65mm – 75 mm leg.

GALAXY MAX - Aluminium extruded profile c/w nylon insert, 90mm leg.

Barrel:

GALAXY - 70mm Octagonal galvanized steel barrels are used for most applications.

GALAXY MAX - 89mm Round Galvanised steel barrels are used for most applications.

Locking:

Manual - Flush fitting expansion lock in bottom rail.

Electric - Locking arm mechanism fitted to barrel.

Operations:

Manual self-coiling via pre tensioned sprung barrels enabling push up, pull down action or via 240v electric tubular motor operated via rocker switch, key switch or remote control.

Finishes:

Standard mill finished aluminium. Can be anodized or powder coated to a standard RAL or BS4800 number to suit an individual application.

Applications

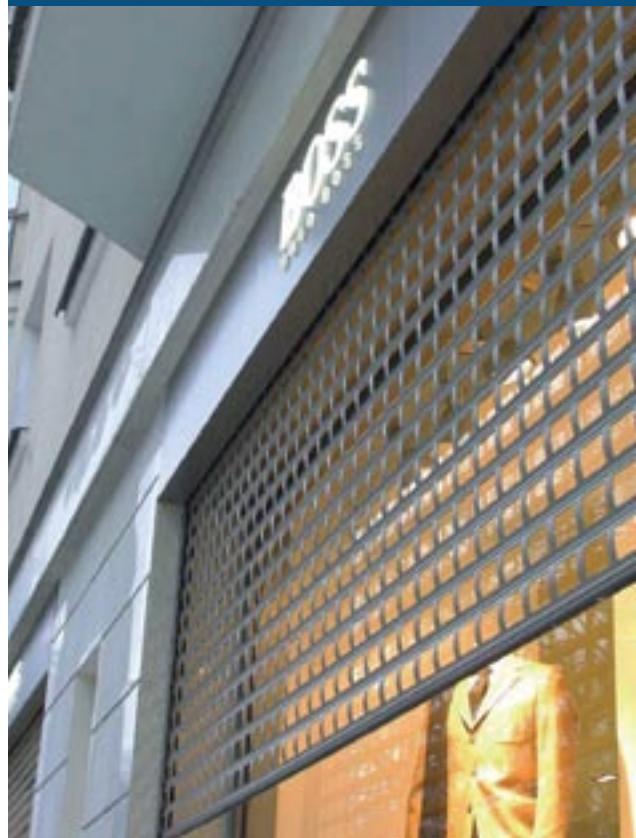
Modern buildings contain significant valuables inside and protecting these, whether it be stock, computers or confidential paperwork, is a high priority.

Galaxy Rolling Grilles are excellent for every commercial sector; these include the leisure industry, retail outlets, office complexes, health, education and local authorities.

Elegantly designed, they are aesthetically pleasing and are able to be fitted internally or externally. The punched lath allows for natural light and visibility whilst retaining a high level of security from its strong, extruded aluminium profile.


The Galaxy range is available in widths of up to 7 metres whilst still being able to roll into a compact sized box.

The grilles can be polyester powder coated to any standard RAL / BS4800 number to compliment any colour scheme.



“Excellence in retractable security”

www.amosecurity.co.uk



Excellence in retractable security



Unit 6 Sycamore Industrial Estate
Walkley Lane, Heckmondwike, WF16 ONL
tel: 01924 412666 **fax:** 01924 412233
e-mail: sales@amosecurity.co.uk
web: www.amosecurity.co.uk

www.amosecurity.co.uk